



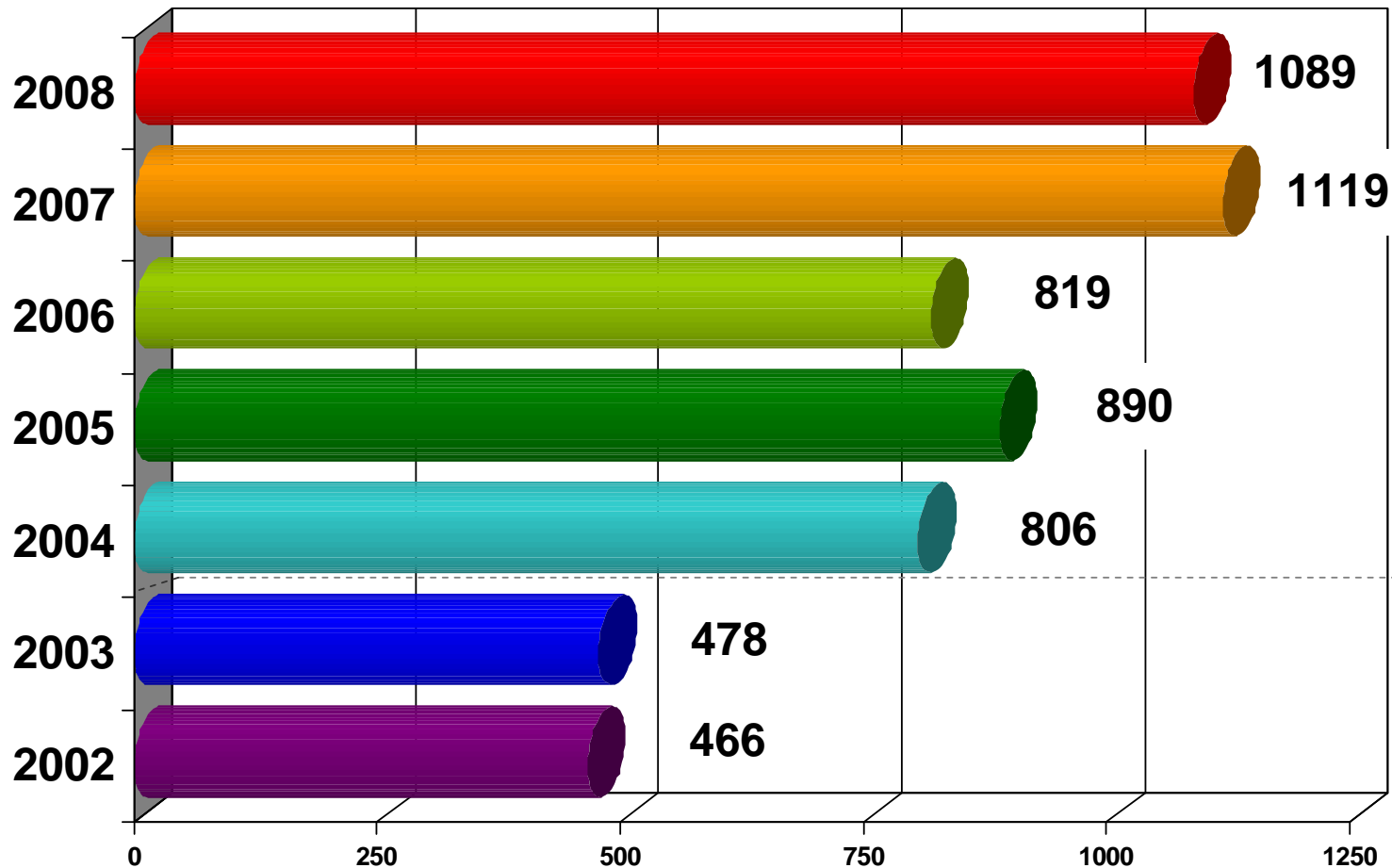
# City of Woodinville Volunteer Program

Comparative Analysis

2002 - 2008

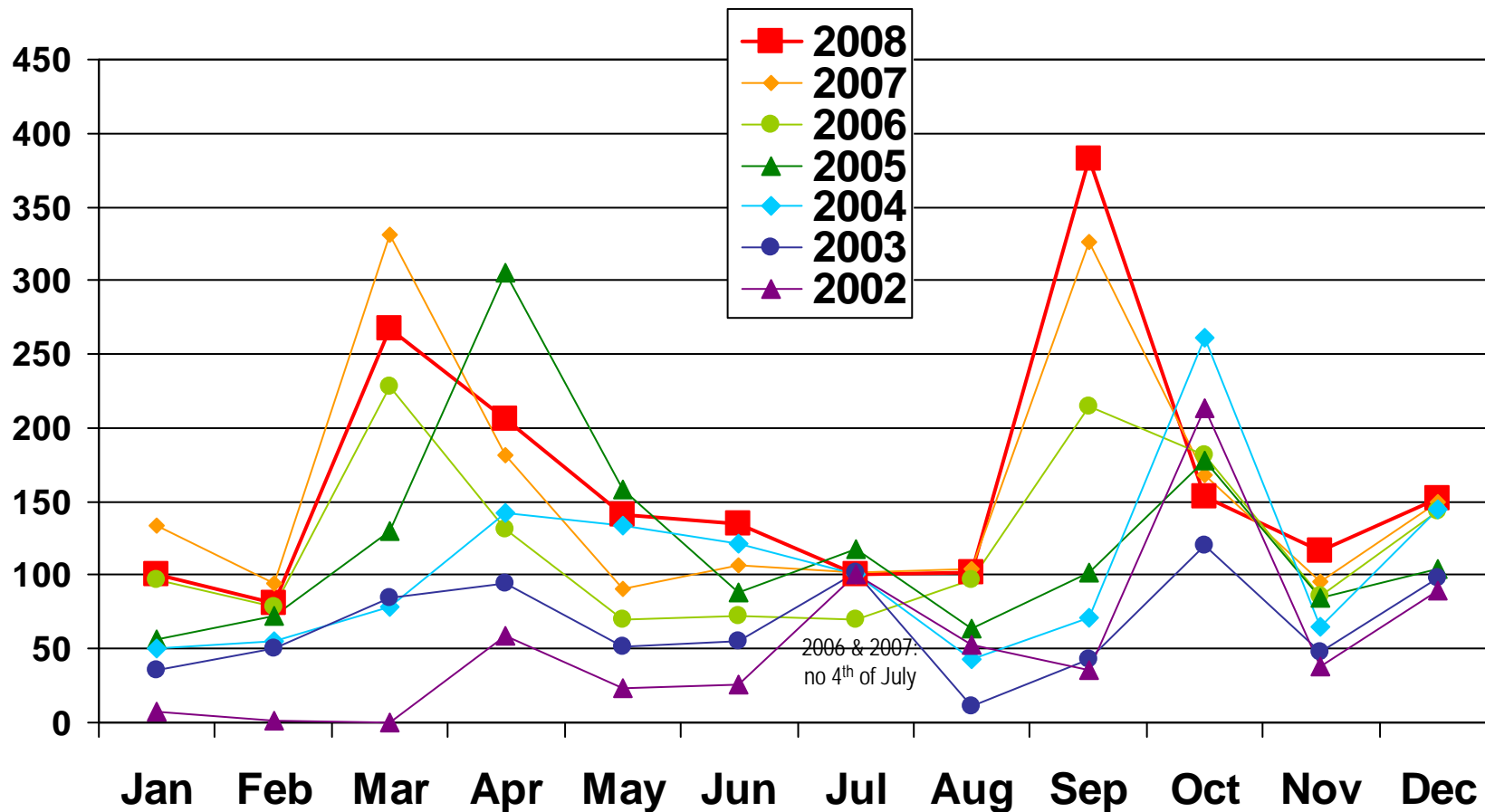
# Total Volunteers

(unduplicated annual count)



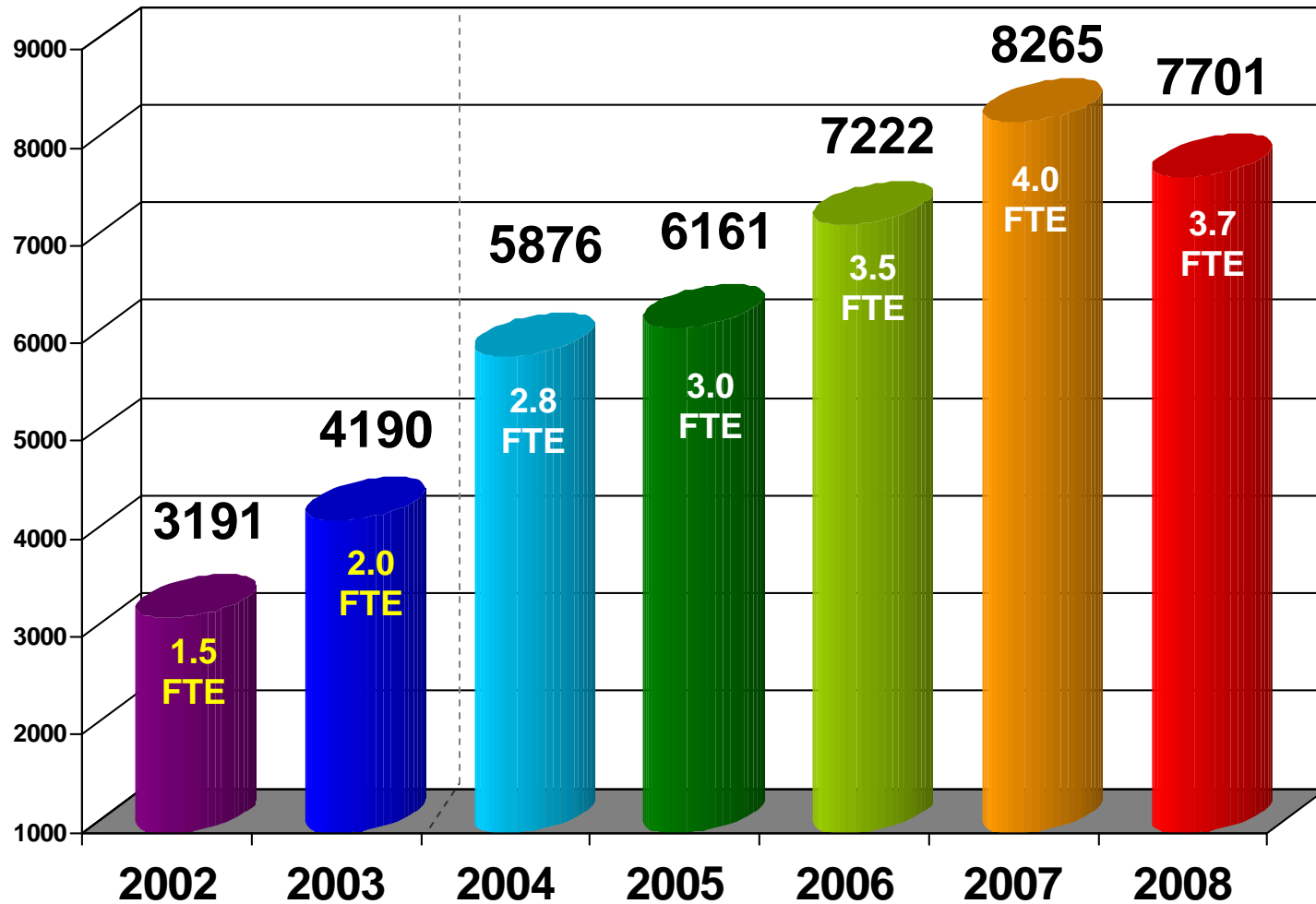
# Number of Active Volunteers

(per month, duplicate count)

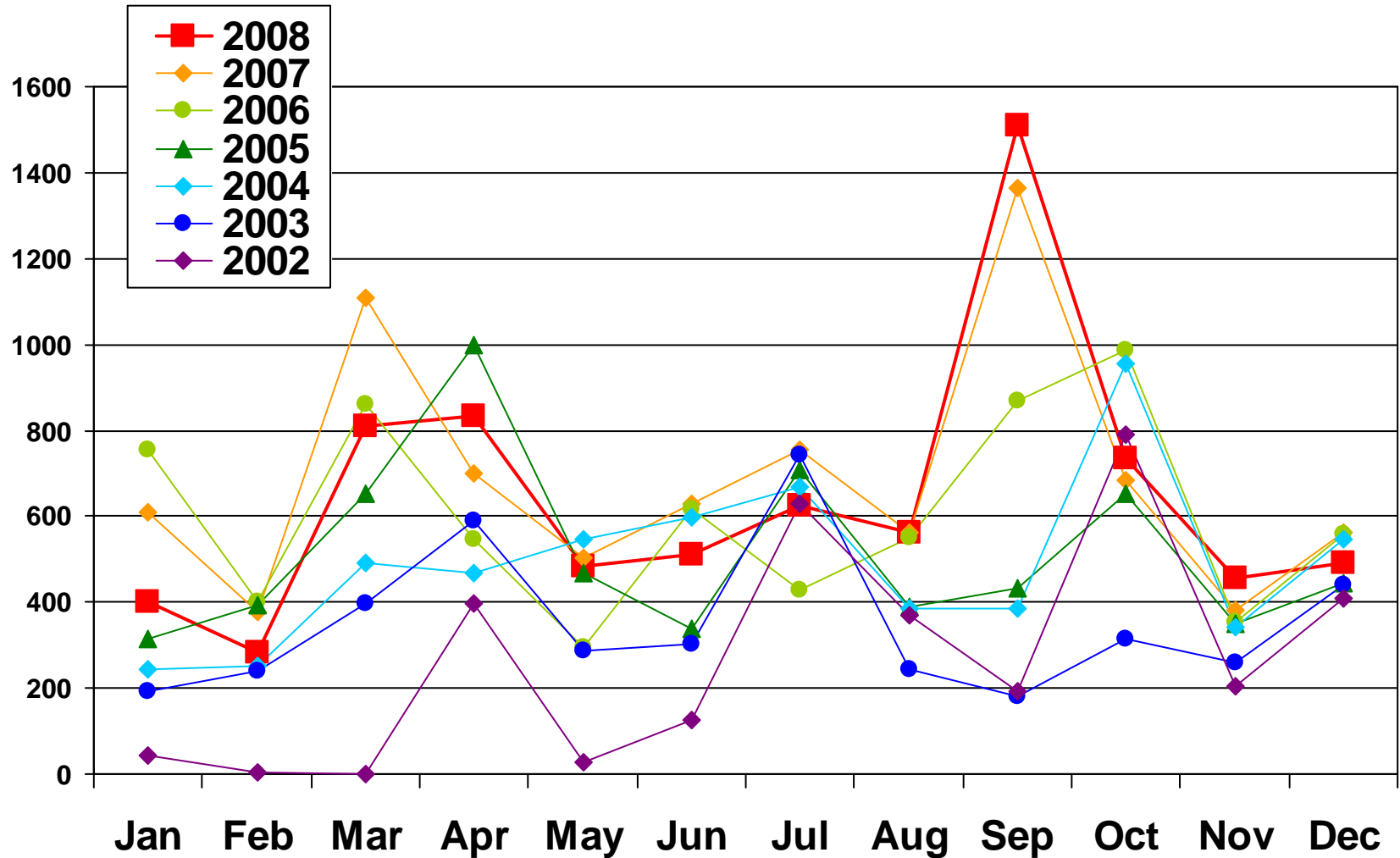


# Total Volunteers Hours – YTD

(2080 hours = 1.0 FTE)

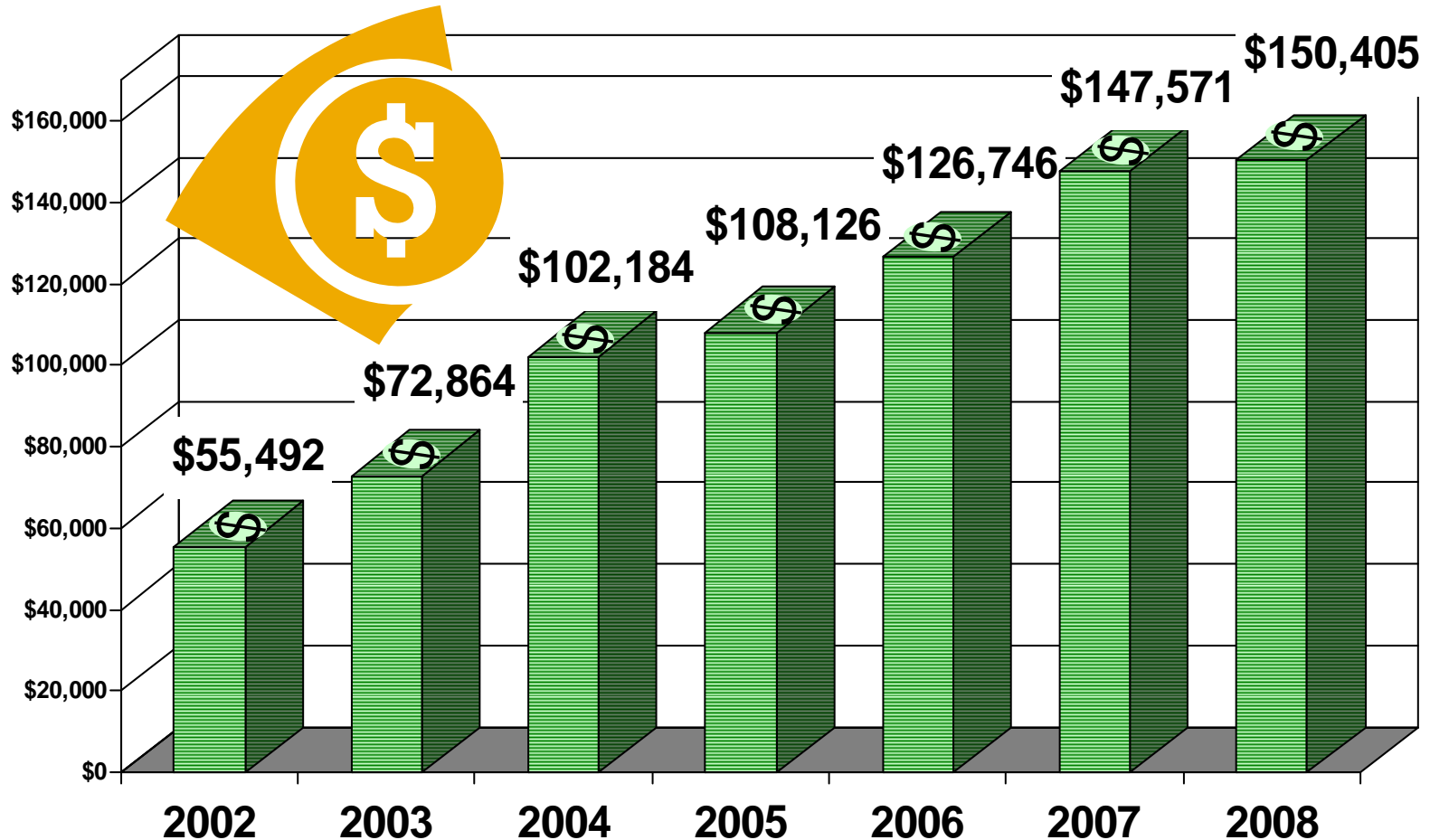


# Volunteer Hours per Month



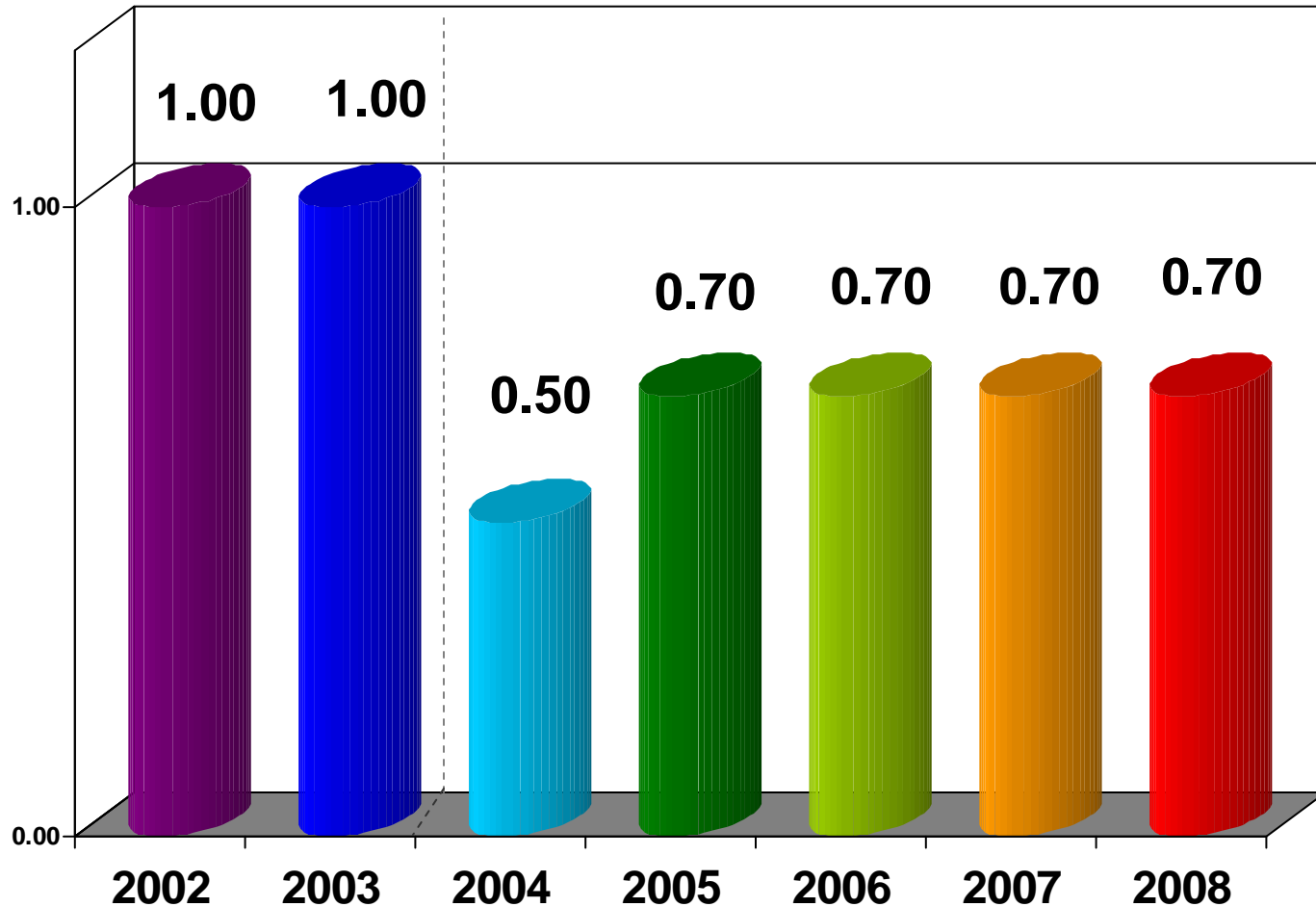
# Value of Volunteer Hours

(Independent Sector currently estimates Washington State dollar value of volunteering at **\$19.53** per hour<sup>^</sup>)



<sup>^</sup> 2002-04 = \$17.39/hr; 2005 & 2006 = \$17.55/hr; 2007 = \$17.92/hr; 2008 = \$19.53

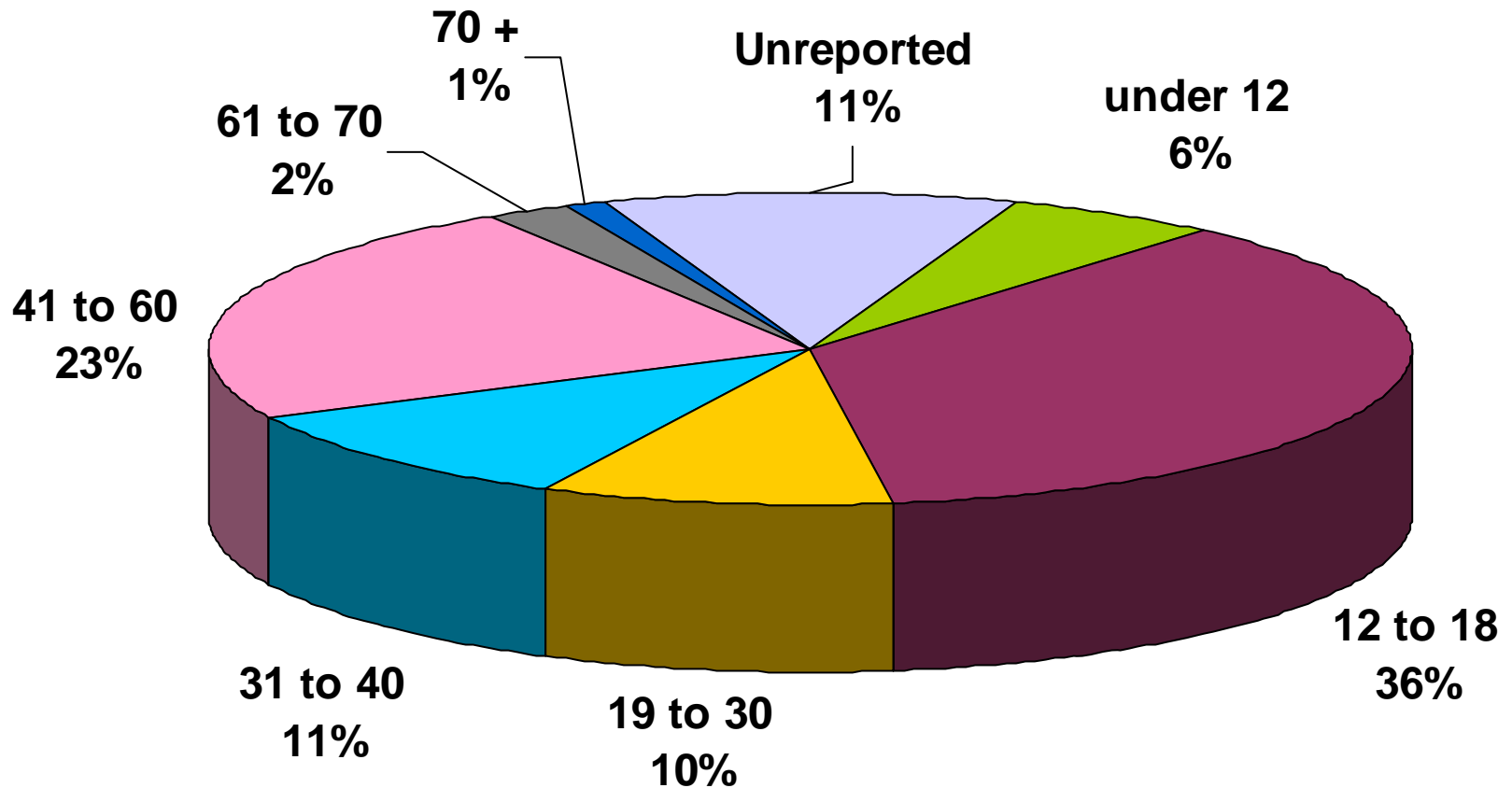
# Volunteer Coordinator F.T.E.



# Volunteer Age Distribution

2008 Volunteers

Total = 1,119



# 2008 Volunteer Program Sponsors, Donors & Partners

**Total Value of Sponsorships & Donations = \$4,600**

- 21 Acres
- Apollo Fuhriman (trees/plants)
- The Adventure School (Kirkland)
- David Boller Contracting
- Boy Scout Troops + Eagle Scouts
- Brittany Park Retirement Center
- Brooks Running (Bothell)
- Chrysalis School
- City of Issaquah
- City of Redmond
- Clif Bar
- Cold Stone Creamery
- Community Threads
- Foursquare Church
- Girl Scout Troops
- Health Moves
- Jamba Juice – Woodinville
- Jan Kiehl (trees)
- Jet City Pizza - Woodinville
- King Co. Parks / Natural Resources
- King Co. Noxious Weed
- Lions Club – Woodinville
- Jack Lockhart (trees & plants)
- Java Loft
- Keith Megay Photography
- Maltby Café
- Mercer Island High School Interact Club
- Microsoft Corporation
- New Life Christian Church
- Northshore School District Health Occupations
- Qdoba Mexican Grill
- Rotary Club - Woodinville
- REI (Redmond)
- RH2 Engineering
- Redmond High School
- Sammamish Valley Alliance
- Sammamish Valley Grange
- Soul Food Books
- Starbucks
- Theno's Dairy
- Timbercrest Junior High NHS
- Tot Spot Cafe
- University of Washington (Bothell) Students In Service
- Woodinville Community Methodist Church
- Woodinville High School
- Woodinville Montessori School

