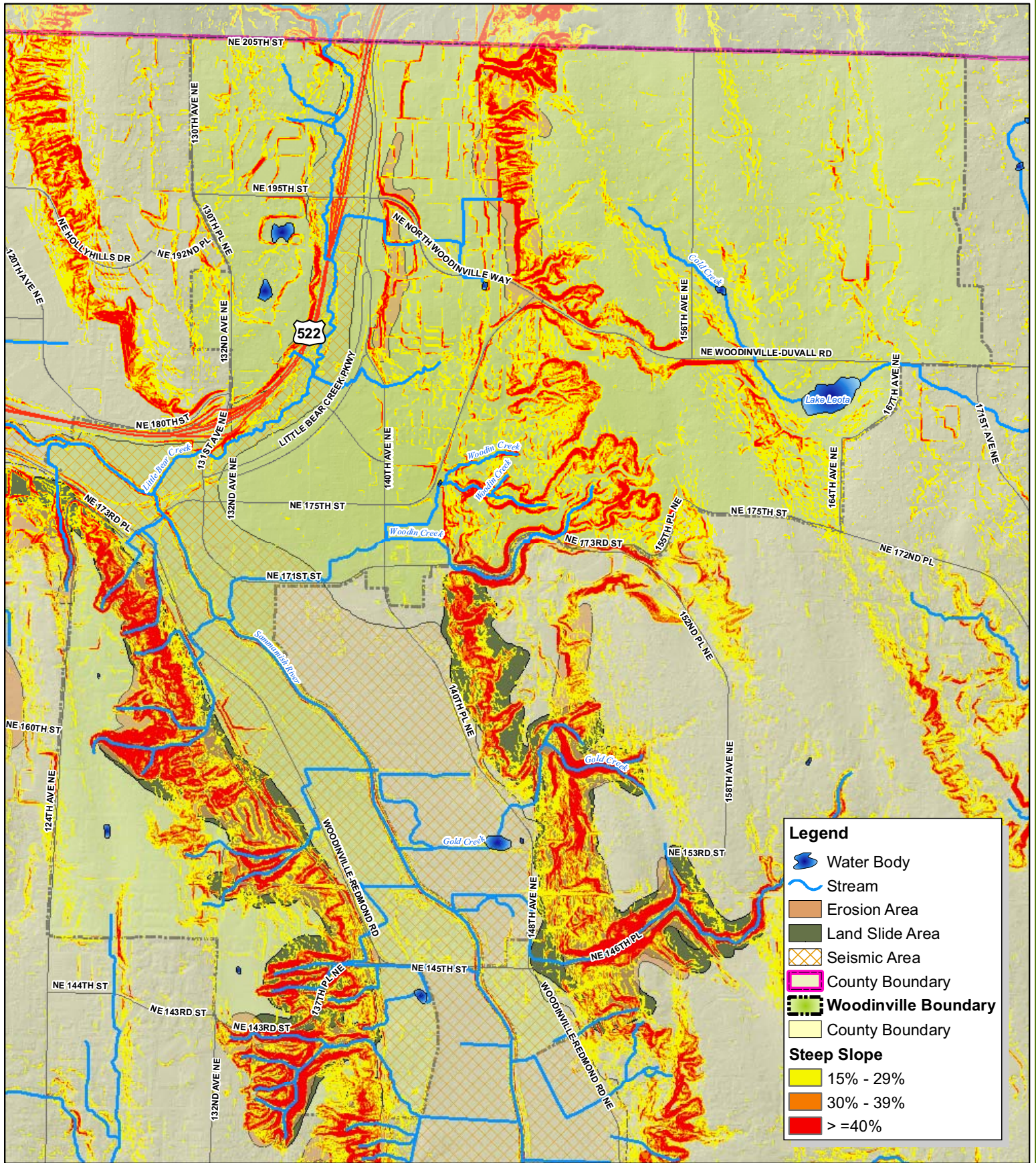


City of Woodinville



Legend

- Water Body
- Stream
- Erosion Area
- Land Slide Area
- Seismic Area
- County Boundary
- Woodinville Boundary
- County Boundary

Steep Slope

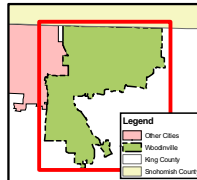
- 15% - 29%
- 30% - 39%
- >=40%

Sensitive Geological Areas



1 inch equals 2,200 feet

File Name: Geological Areas.mxd



NO	DESIGN/REVISION	DATE	BY
1	Final	12/04/06	AU
2	Uploaded Steep Slopes	10/17/07	AU
3			
4			
5			

City of Woodinville
17301 - 133rd Ave NE
Woodinville, WA 98072
www.woodinville.wa.us
425-489-2700

Disclaimer
Any use of or reliance upon the information contained in this document is at the user's sole risk. The City of Woodinville does not warrant the accuracy, currency, completeness or quality of said information. The City expressly disclaims any warranty of merchantability or fitness for any particular purpose with respect to such information. The City further disclaims all responsibility or liability for any damage, injury or loss resulting therefrom.